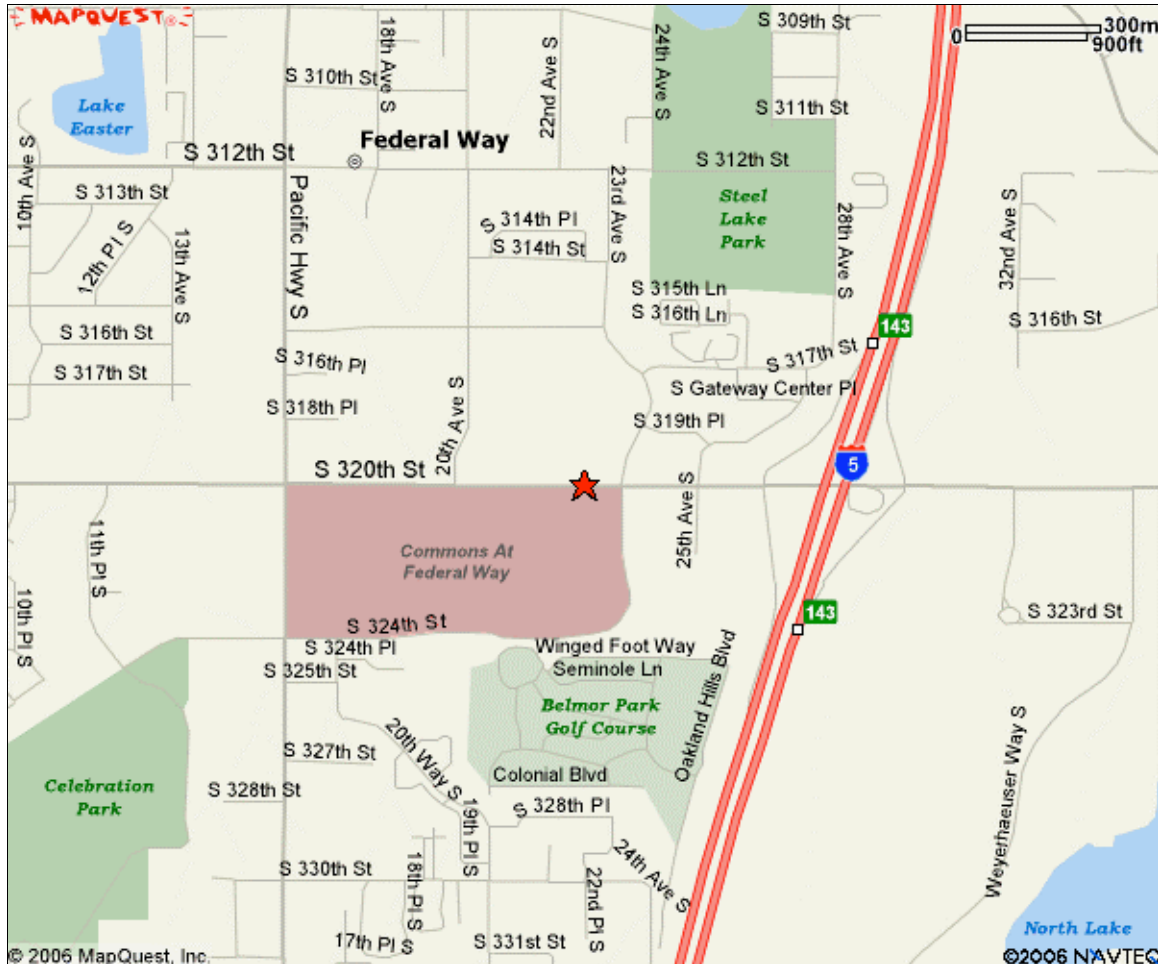


FEDERAL WAY
MDSI PHYSICIAN SERVICES
SCHOFIELD CHIROPRACTIC
2210 S 320th
Suite A-3
Tel. 800-548-9092



North I-5: Take exit #143 for 320th. Turn left at the light and get into the right hand lane. Cross over the freeway. Turn right at the 2nd light at 23rd Ave S by McDonalds. Take the second drive way on the left-hand side in front of the Outback Steakhouse. Schofield Chiropractic office is the 3rd office on the right.

South I-5: Take exit #143 for 320th. Stay in the right hand lane of this exit (there are 3 lanes). Turn right and stay in that lane. Turn right at the 2nd light at 23rd Ave S by McDonalds. Take the second drive way on the left-hand side in front of the Outback Steakhouse. Schofield Chiropractic office is the 3rd office on the right.

Pacific Highway South: Go to 320th and head east towards I-5. Get into the left lane. Turn left at the 23rd Ave south light. Take the second drive way on the left-hand side in front of the Outback Steakhouse. Schofield Chiropractic office is the 3rd office on the right.