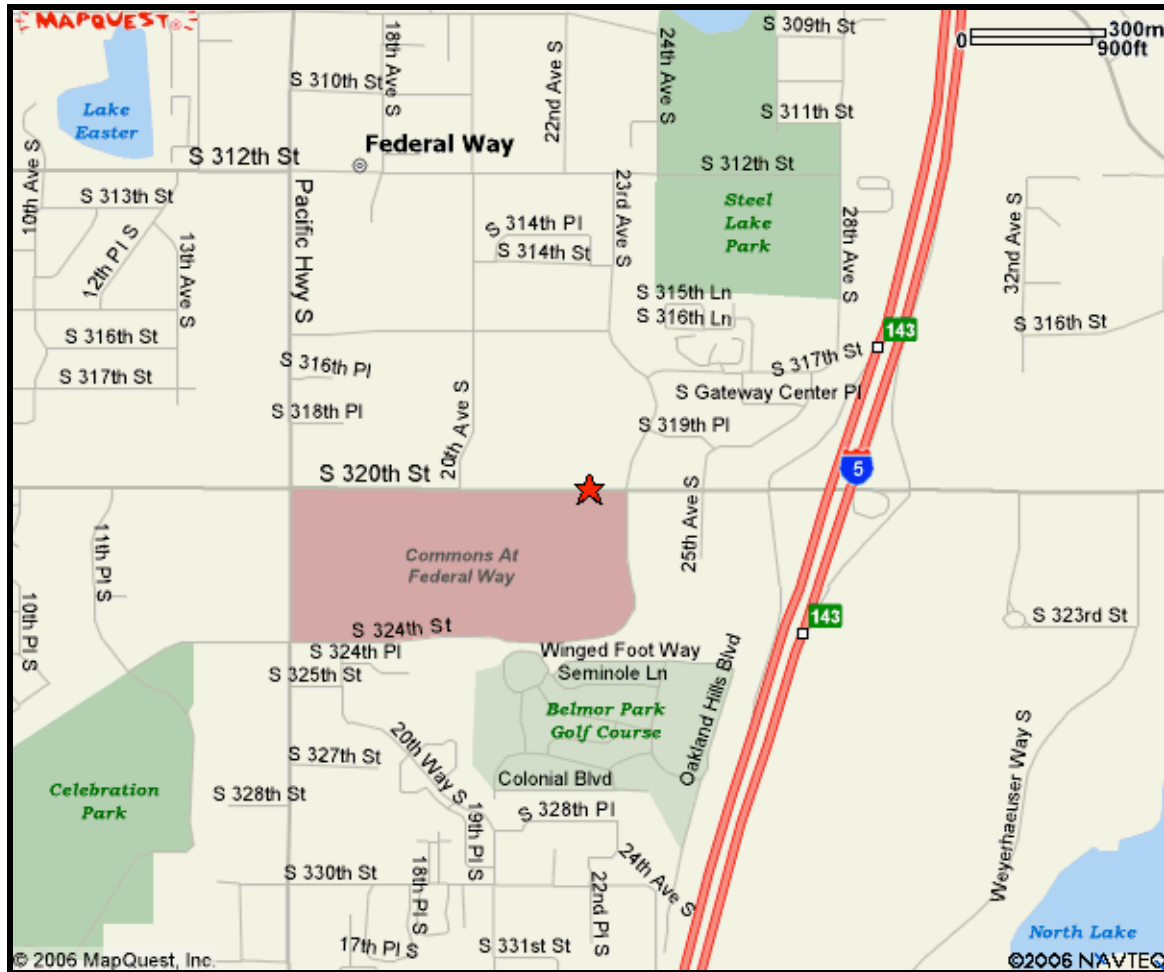


**FEDERAL WAY**  
**MDSI PHYSICIANS GROUP**  
**SCHOFIELD CHIROPRACTIC**  
2210 S 320<sup>th</sup>  
Suite A-3  
800-548-9092  
253-946-4524



**North I-5:** Take exit #143 for 320<sup>th</sup>. Turn left at the light and get into the right hand lane. Cross over the freeway. Turn right at the 2<sup>nd</sup> light at 23<sup>rd</sup> Ave S by McDonalds. Take the second drive way on the left-hand side in front of the Outback Steakhouse. Schofield Chiropractic office is the 3<sup>rd</sup> office on the right.

**South I-5:** Take exit #143 for 320<sup>th</sup>. Stay in the right hand lane of this exit (there are 3 lanes). Turn right and stay in that lane. Turn right at the 2<sup>nd</sup> light at 23<sup>rd</sup> Ave S by McDonalds. Take the second drive way on the left-hand side in front of the Outback Steakhouse. Schofield Chiropractic office is the 3<sup>rd</sup> office on the right.

**Pacific Highway South:** Go to 320<sup>th</sup> and head east towards I-5. Get into the left lane. Turn left at the 23<sup>rd</sup> Ave south light. Take the second drive way on the left-hand side in front of the Outback Steakhouse. Schofield Chiropractic office is the 3<sup>rd</sup> office on the right.

**We sit between Laser Quest and Paldo World (Asian Store). We are 2 doors down from the Outback Steak House/Parking lot behind Wendy's.**